

Apartment (EPC Rating: C)

**APARTMENT 414, 185, Q4 APARTMENTS**  
**UPPER ALLEN STREET, SHEFFIELD, S3 7GY**  
Per month

**£675 Per**



# I Bedroom Apartment located in Sheffield

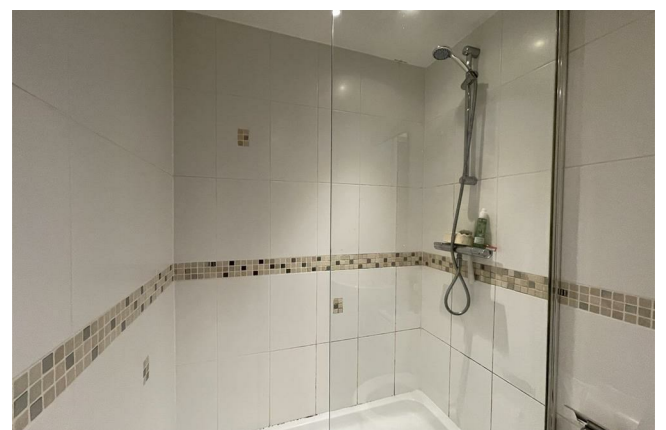
Luxurious One-Bedroom Apartment - Available July 4th, 2025

Rent: £710 per calendar month

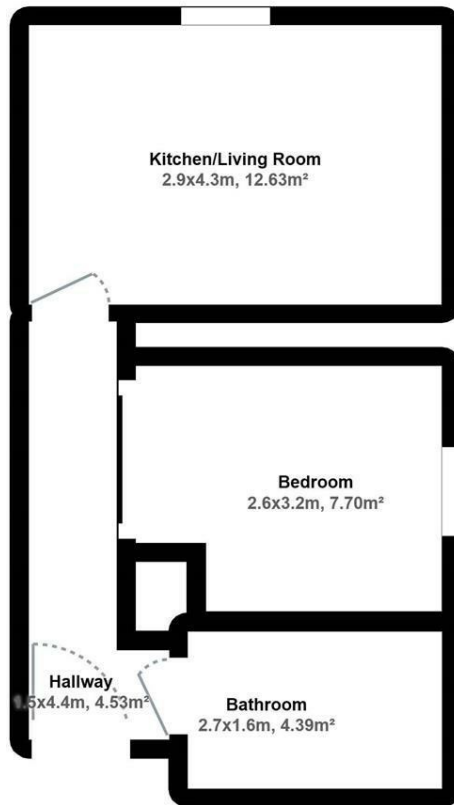
Indulge in luxury living with this exquisite one-bedroom apartment, perfect for a couple or a single person working in the city center or studying at Sheffield University.

Key Features:

Modern Living Spaces: The apartment building features both a lift and stairs for your convenience, accessible from Upper Allen Street. A modern reception area and postal room welcome you upon entering, setting the tone for the sophistication within. Japanese-inspired Design: As you step into the apartment, the rich, deep red flooring and Japanese-style glass room dividers immediately capture your attention. The well-planned double bedroom is revealed, showcasing clever space optimization and thoughtful design. Elegant Bedroom: The double bedroom boasts ample fitted wardrobes, featuring a wall-to-ceiling mirror on one panel. Soft stone carpeting adds a touch of luxury to this carefully thought-out room. Luxurious Bathroom: Down the hall from the bedroom, discover a luxurious bathroom with fully tiled walls and floor, brightly lit by recessed spotlights. Enjoy the full room-width shower with a frameless glass screen, a stylish towel ladder radiator, Villeroy & Boch porcelain, Grohe fittings, and tiled recesses with a mirrored fronted cabinet. Contemporary Lounge: Enter the lounge where wood flooring extends to full-height windows, bathing the room in natural light. The recessed kitchen, a piece of designer furniture in itself, conceals a fridge, freezer, dishwasher, oven, hob, and extractor. Convenient Amenities: The hallway conceals a built-in washer, dryer, and utility cupboard, ensuring convenience and functionality. Perfect Location: Ideal for professionals or students, this apartment is perfectly situated for those working in the City Centre or attending Sheffield University..







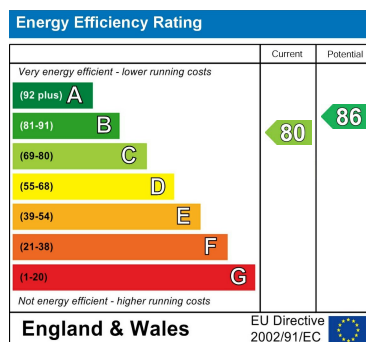
The provider and/or software owner gives NO guarantee in relation to layout or measurement accuracy of this floorplan and by using it, you accept full liability for any errors, omissions or inaccuracies.

## Apt 414, Q4

Council Tax Band

**A**

Energy Performance Graph



Call us on

**0114 2129777**

**hello@rent2you.org**

**rent2you.org**

Agents Note: Whilst every care has been taken to prepare these particulars, they are for guidance purposes only. All measurements are approximate and are for general guidance purposes only and whilst every care has been taken to ensure their accuracy, they should not be relied upon and potential buyers are advised to recheck the measurements.